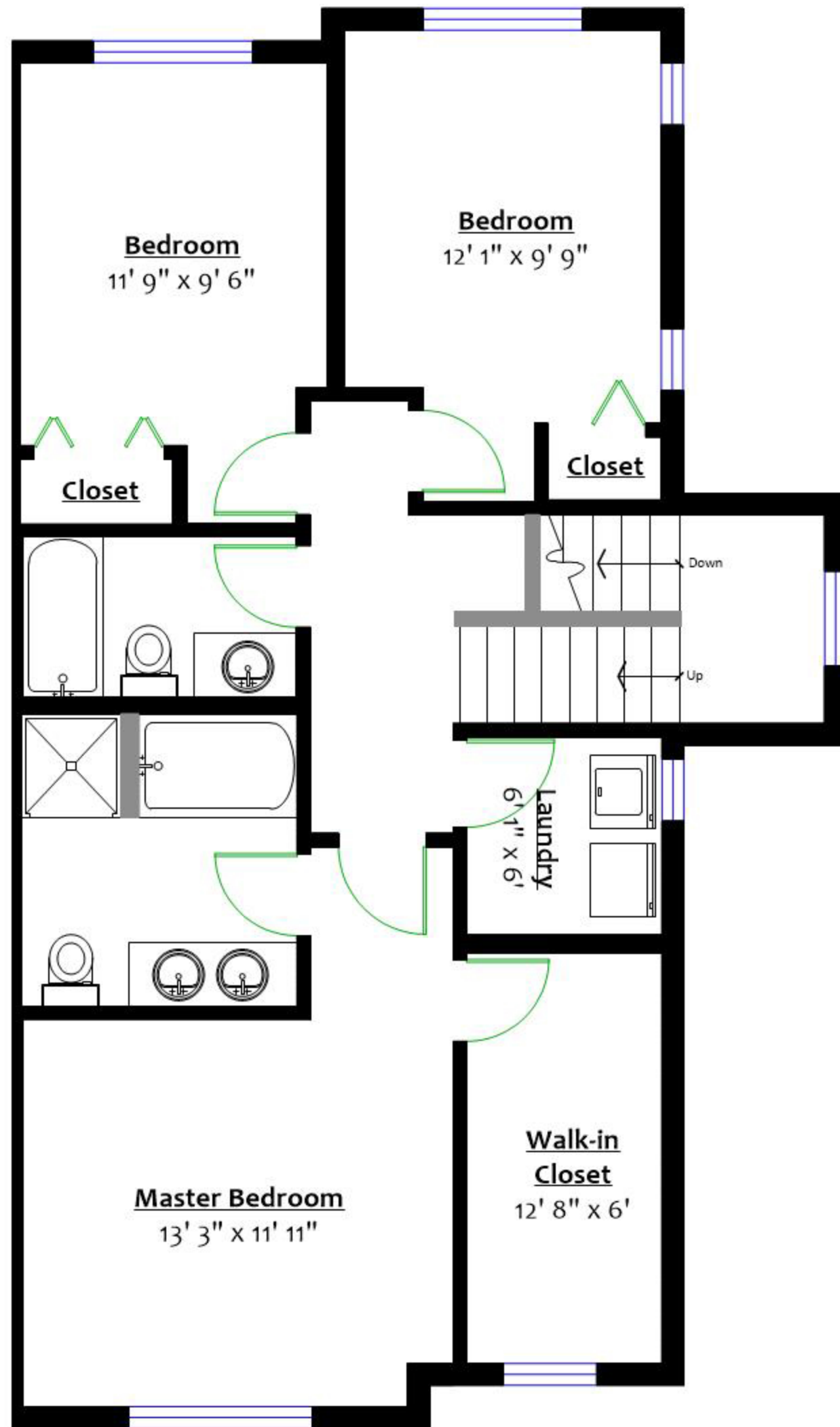


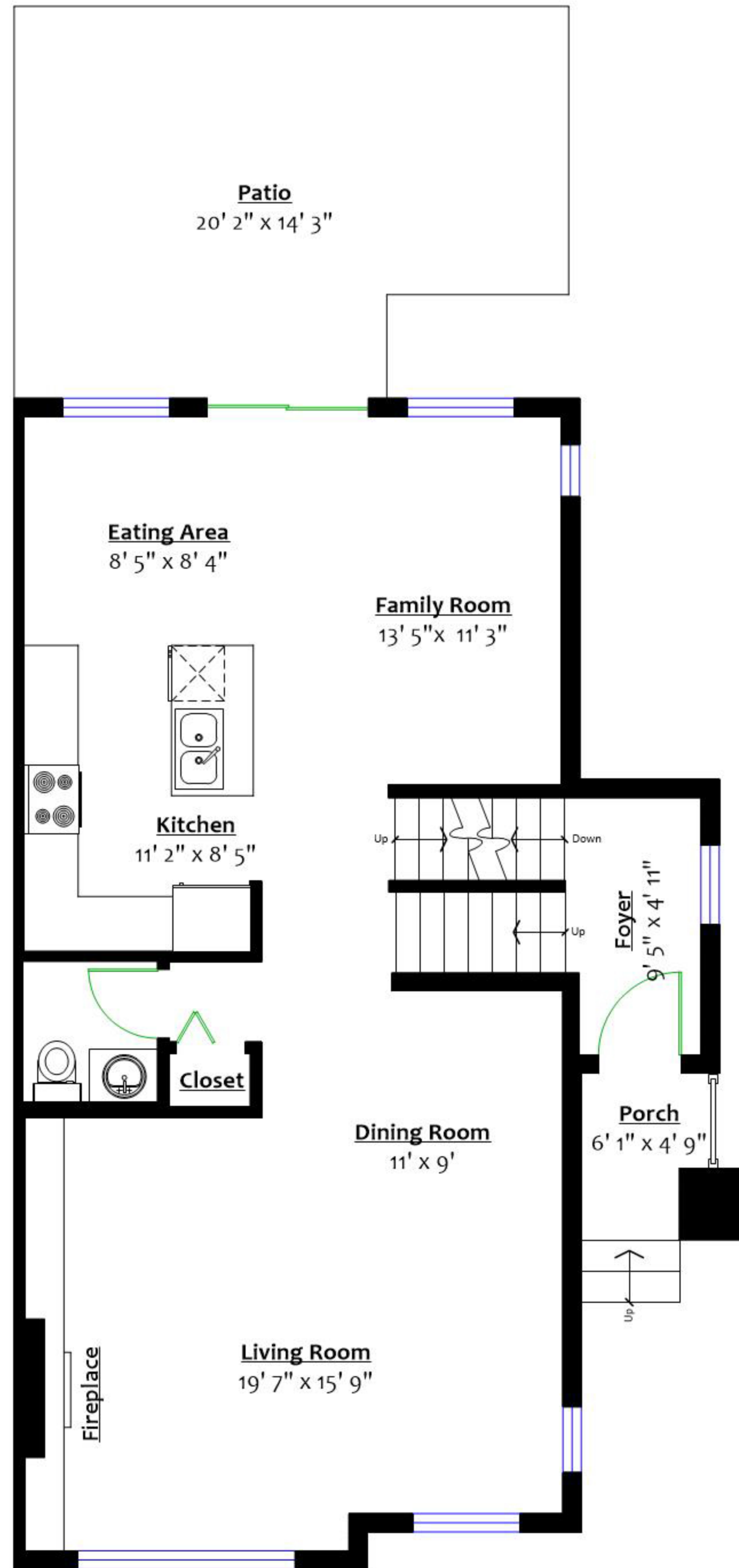
#52 – 10605 Delsom Crescent, Delta, B.C.

Totals**

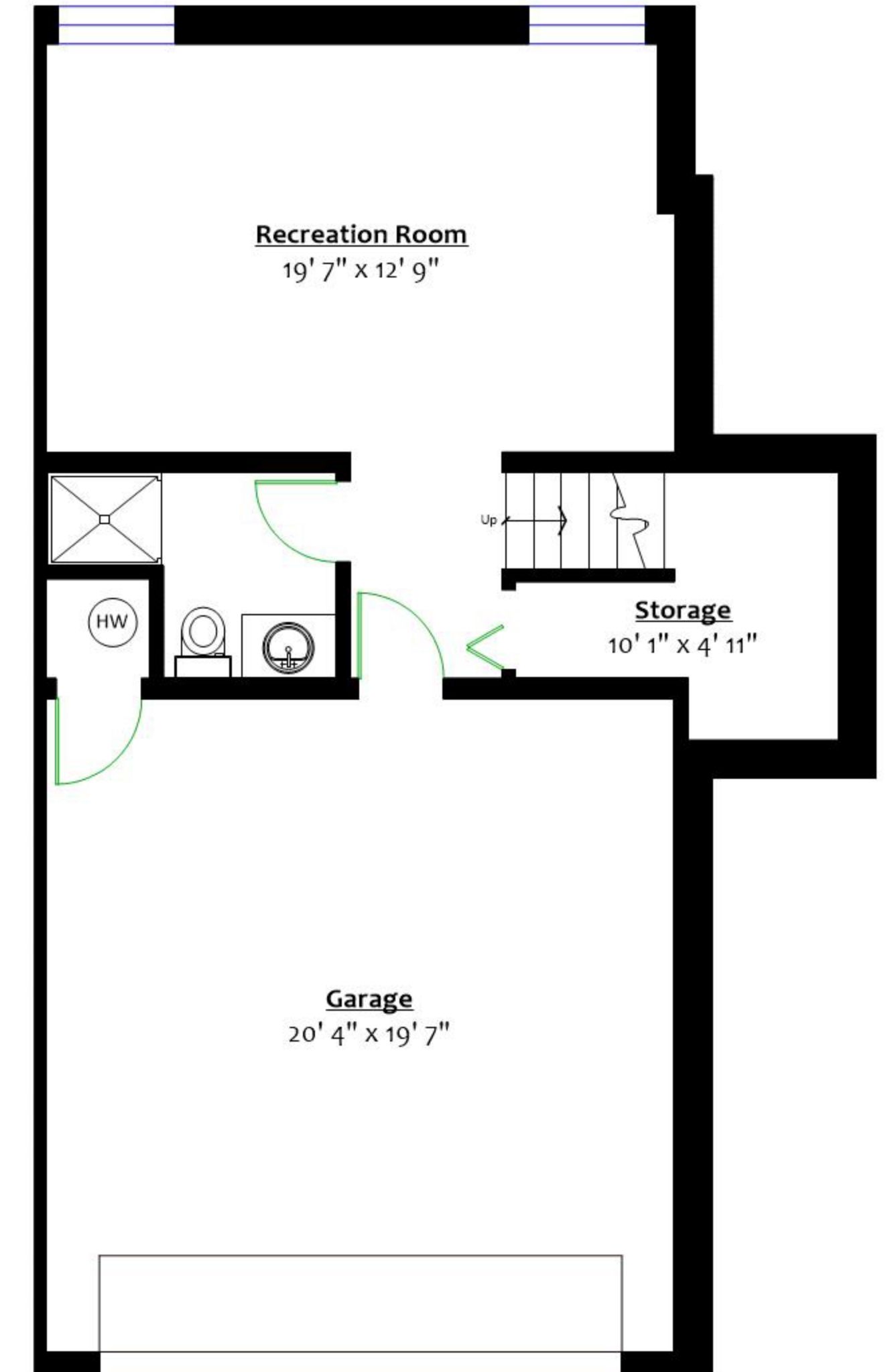
Main Level:	923 sq. ft.	Garage:	438 sq. ft.
Upper Level:	919 sq. ft.	Mechanical:	13 sq. ft.
Lower Level:	495 sq. ft.	Patio:	263 sq. ft.
Total:	2,337 sq. ft.	Total:	714 sq. ft.



UPPER LEVEL
Floor Area: 919 Sq. Ft.



MAIN LEVEL
Floor Area: 923 Sq. Ft.



LOWER LEVEL
Floor Area: 495 Sq. Ft.



** Approx. based on interior measurements to exterior walls
 ** Total square footage not taken from original blueprints
 ** Total square footage includes under-height areas