

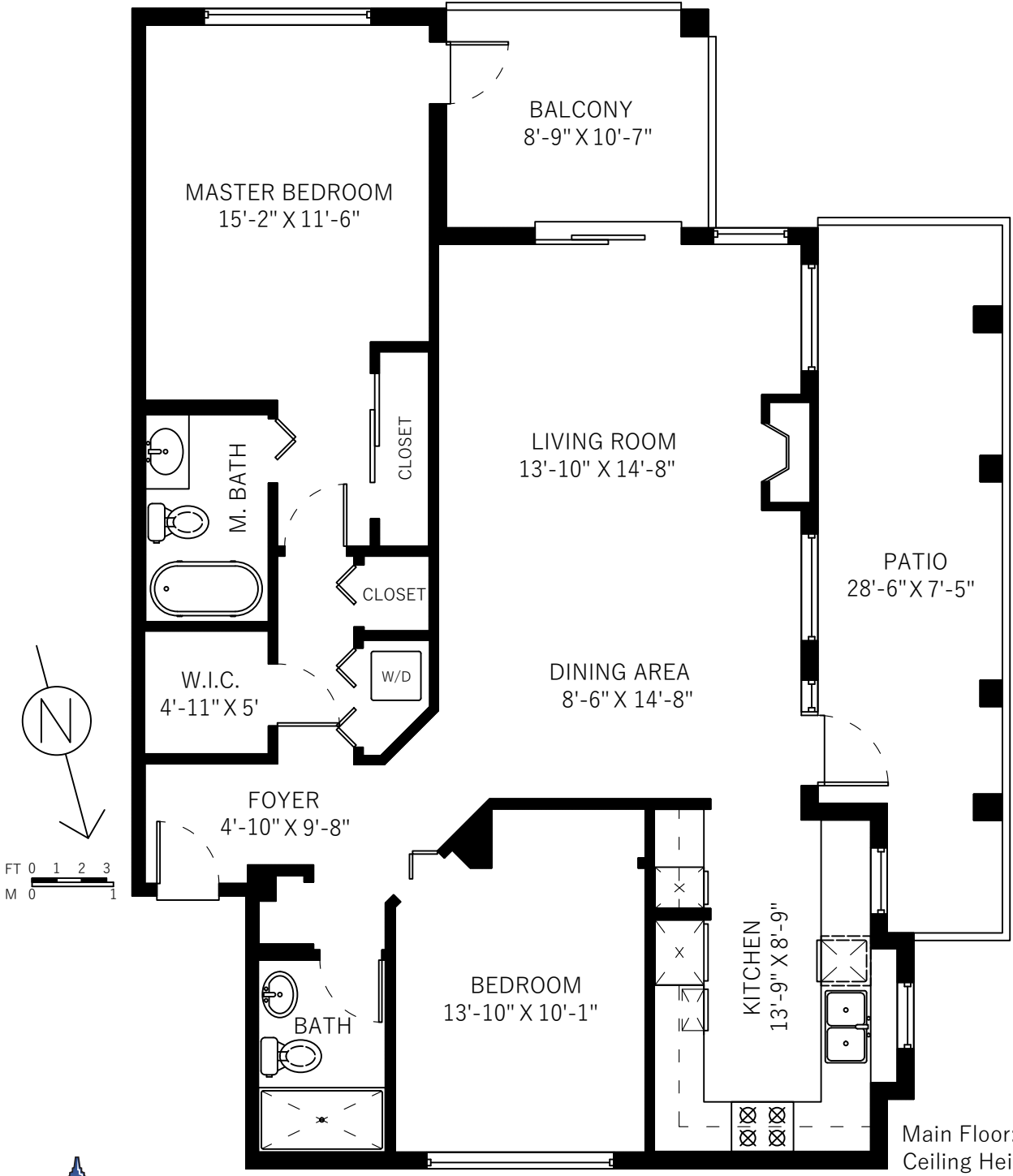
306-12 Laguna Ct
 New Westminster, BC

Main Floor 1150 SQ.FT.

Patio 210 SQ.FT.

Balcony 97 SQ.FT.

Total Extras 307 SQ.FT.



Main Floor: 1150 Sq.Ft.
 Ceiling Height: 8'



Floor plan not suitable for architectural/construction purposes. ANSI Z765 standard used to calculate square footage. Buyer to verify.

