

16712 92a Ave.  
Surrey

MAIN LEVEL

1708 sq.ft.

GARAGE

574 sq.ft.

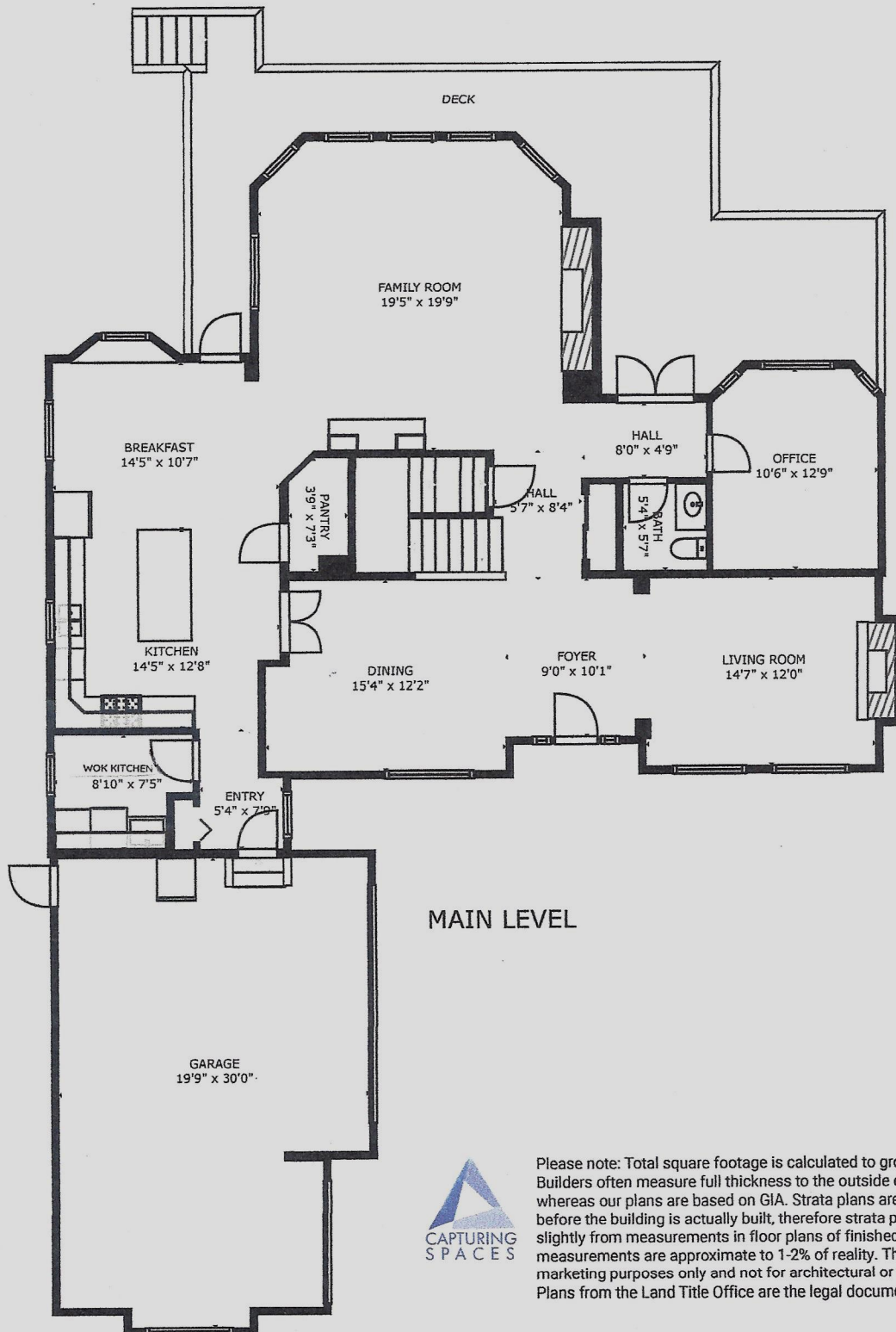
Sukhi Kang

604.377.1246

kangrealty@gmail.com

**THE SUKHI KANG TEAM**

Century 21 Coastal Realty Ltd.



MAIN LEVEL



Please note: Total square footage is calculated to gross internal area (GIA). Builders often measure full thickness to the outside exterior of the walls, whereas our plans are based on GIA. Strata plans are often drawn up before the building is actually built, therefore strata plans may differ slightly from measurements in floor plans of finished units. All measurements are approximate to 1-2% of reality. This floor plan is for marketing purposes only and not for architectural or construction use. Plans from the Land Title Office are the legal documents

16712 92a Ave.  
Surrey

UPPER LEVEL

1599 sq.ft.

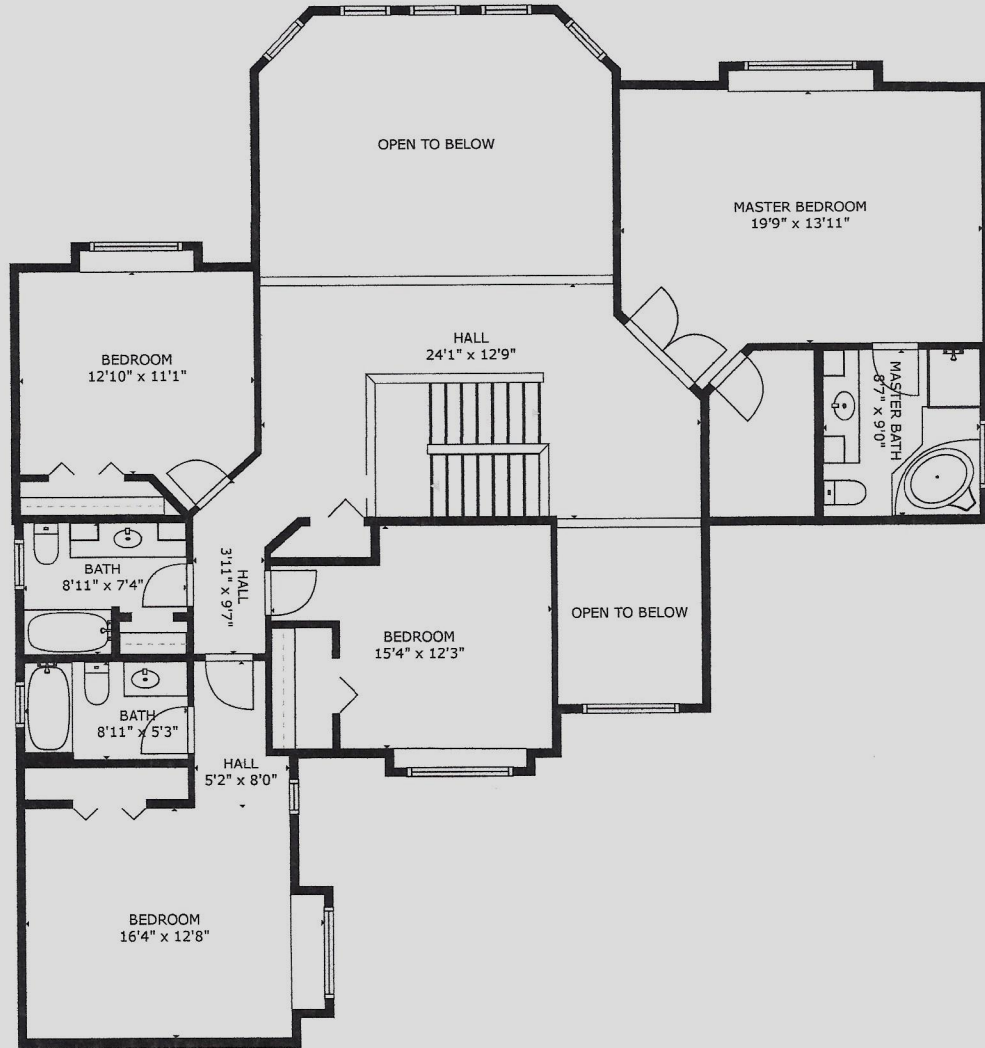
Sukhi Kang

604.377.1246

kangrealty@gmail.com

**THE SUKHI KANG TEAM**

Century 21 Coastal Realty Ltd.



UPPER LEVEL



Please note: Total square footage is calculated to gross internal area (GIA). Builders often measure full thickness to the outside exterior of the walls, whereas our plans are based on GIA. Strata plans are often drawn up before the building is actually built, therefore strata plans may differ slightly from measurements in floor plans of finished units. All measurements are approximate to 1-2% of reality. This floor plan is for marketing purposes only and not for architectural or construction use. Plans from the Land Title Office are the legal documents

16712 92a Ave.  
Surrey

LOWER LEVEL

1633 sq.ft.

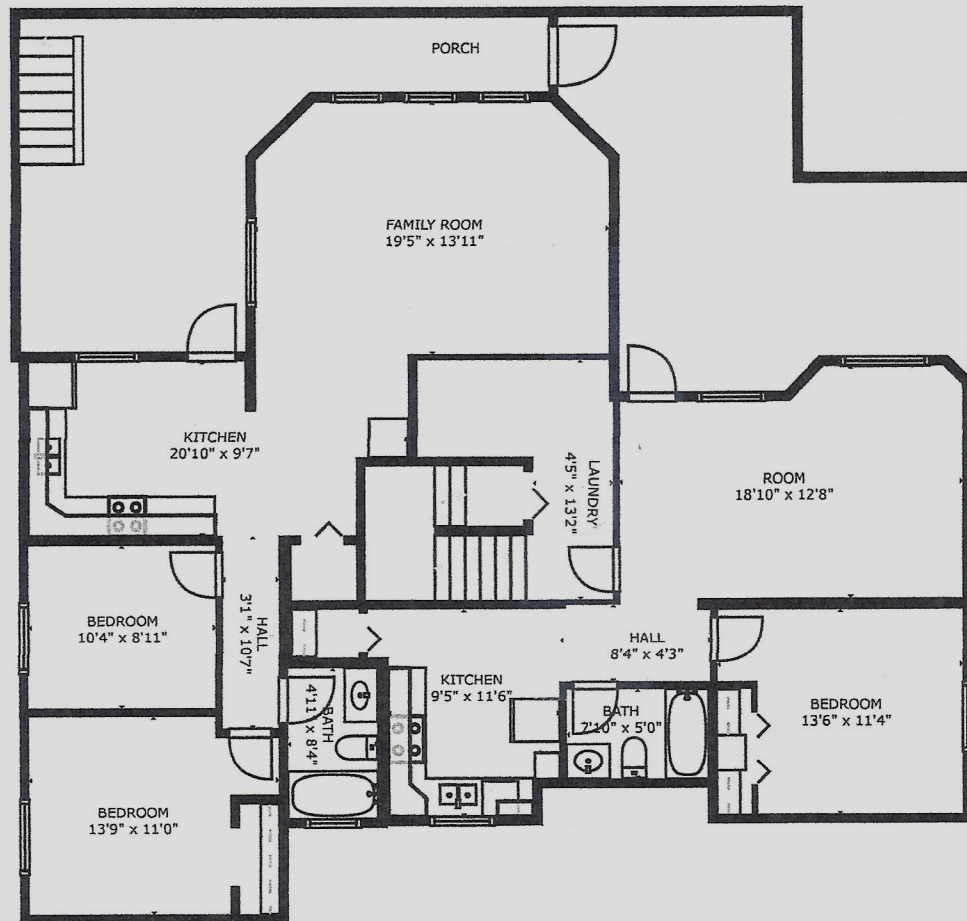
Sukhi Kang

604.377.1246

kangrealty@gmail.com

**THE SUKHI KANG TEAM**

Century 21 Coastal Realty Ltd.



LOWER LEVEL



Please note: Total square footage is calculated to gross internal area (GIA). Builders often measure full thickness to the outside exterior of the walls, whereas our plans are based on GIA. Strata plans are often drawn up before the building is actually built, therefore strata plans may differ slightly from measurements in floor plans of finished units. All measurements are approximate to 1-2% of reality. This floor plan is for marketing purposes only and not for architectural or construction use. Plans from the Land Title Office are the legal documents