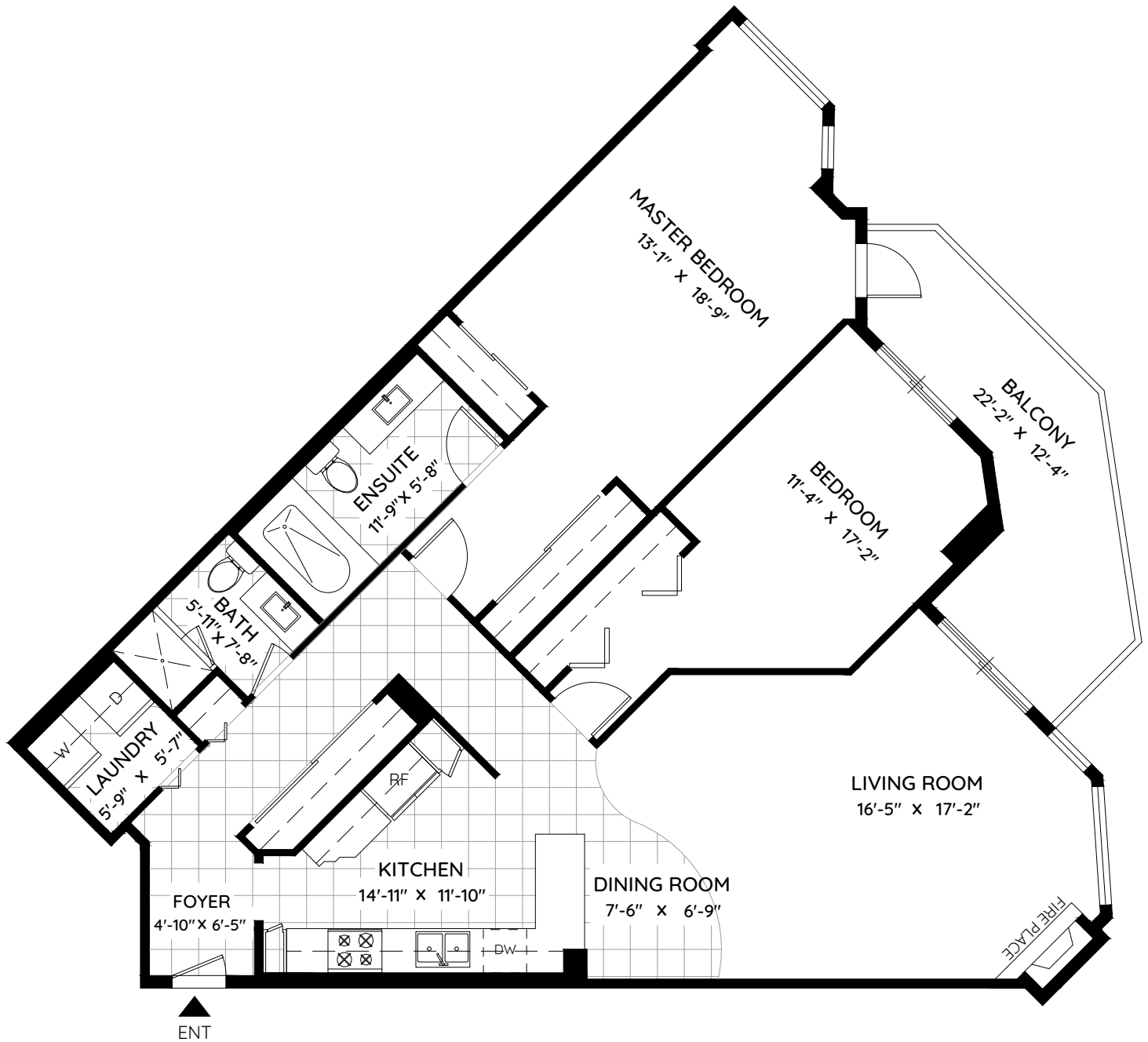


1401 - 1235 QUAYSIDE DRIVE

NEW WESTMINSTER, BC



LIVING AREA	1,372 SQ.FT.
BALCONY	148 SQ.FT.
CEILING HEIGHT	8'-0"



0 ft 3 ft 5 ft

The floor plan and the measurements are approximate and are to be used for advertising usage only. Not suitable for architectural or construction. E&O Insured

